

Falcon Scale Models

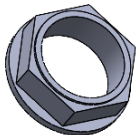


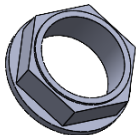
Suzuki GSX RR 2020 - chain (Tamiya 14139)

Catalog no.: FSM 1

Installation guide

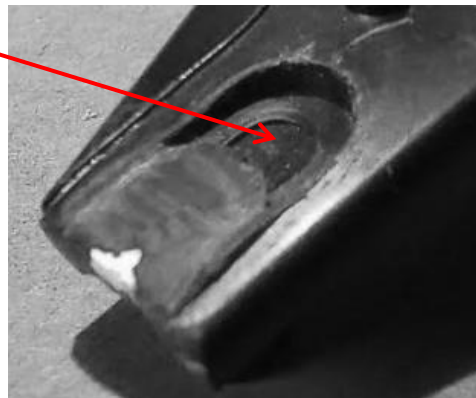
Chain installation:

1. Verify diameter of central hole in rear sprocket with the B30 part.
2. Paint the FSM 1 chain.
3. Use chain from the kits as template and cut FSM 1 chain. Use sharp cutters and cut one link at a time.
4. Paint rear sprocket screws (short ones) and install them into the sprocket. If required use 0.7 mm drill to correct hole diameter in the rear sprocket. Use original chain and B30 part as references for screw installation.
5. Use  as a nut for front sprocket.



Remark

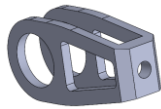
Those sections in B28 and B29 should be removed to achieve more realistic look. This task should be done only by the most experienced modeler. This step IS NOT REQUIRED for installation of FSM 1 kit.



Chain tensioner installation:

1. Rear brake side - part B28

- a. Smooth the central section of D45



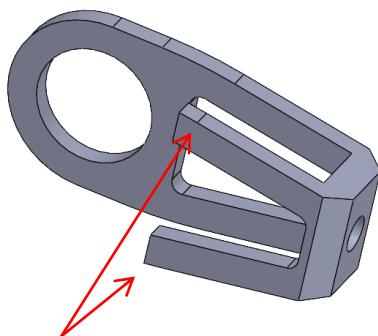
- b. Replace D10 with chain tensioner
- c. Put on chain tensioner on B28 and drill 0.7mm hole (depth about 0.3mm) in the swingarm. Use hole for tensioner screw as a guide for the drill. **If you do not want to drill hole simply shorten the chain tensioner screw.**
- d. Install chain tensioner screw (long one).

2. Chain side – part B29

- a. Smooth the outer side of B29 as show below

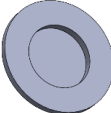


- b. Modify chain the inner section of tensioner as shown below.



Inner elements must touch the cylinder on which you will install the B30.

- c. Put on chain tensioner on B28 and drill 0.7mm hole (depth about 0.3mm) in the swingarm. Use hole for tensioner screw as a guide for the drill. **If you do not want to drill hole simply shorten the chain tensioner screw.**
- d. Install chain tensioner screw (long one).

3. Use  to cover rear wheel mounting screw head.

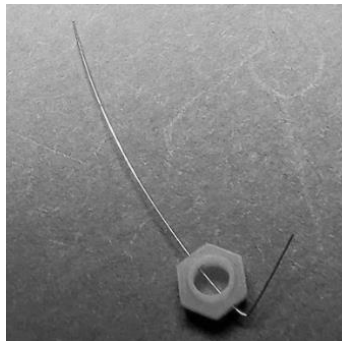
4. Use  to cover the chain tensioner central hole on the chain side.

Wire installation holes

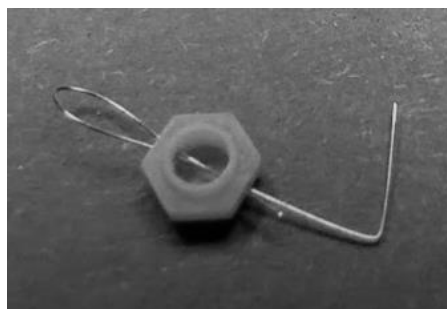
Additionally use thin wire to create cotter which must be passed through the holes in the nut.

Wire installation steps:

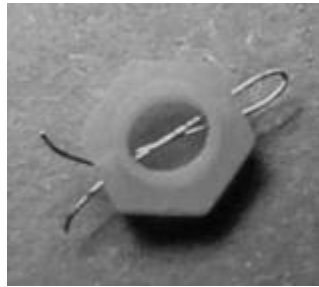
- bend one side of the wire to form it into L shape so the nut will not fall off the wire during installation process,



- holding the nut and bent section of the wire with your fingers grab the second end with the sharp pointed tweezers and pass it through both installation holes. This step can be tricky so take your time. The final result is worth of your work,



- when the second end of the wire has passed both installation holes bend it like the other end and shorten the wire.



The wire can be replaced by the 0.1 mm fishing line (not included in the kit).