

# Falcon

## Scale Models



**Honda RC211V (Tamiya 14106, 14107, 14108) - chain**

**Catalog no.: FSM 037**

### Installation guide

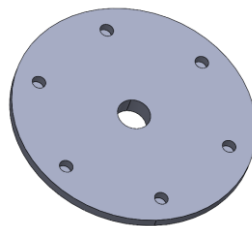
Cut of all parts with the use of sharp cutter (like Tamiya 74035 Sharp Pointed Side Cutter). **DO NOT** break off parts from the supports as you can damage them. Take special care of:

1. Remove all the supports holding screws and rear sprocket mounting plate.

Properly cut off screw



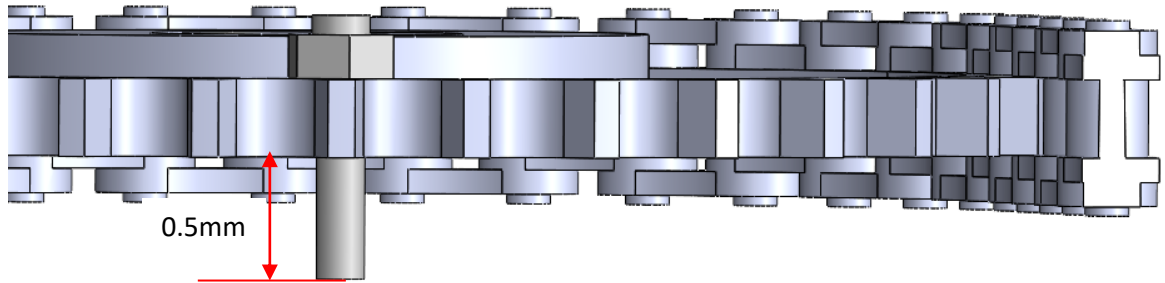
2. Rear sprocket mounting plate has flat bottom side. Smooth it before attaching to the rear sprocket and correct the installation holes with 0.6 – 0.65mm drill. **DO NOT DEEPEN THE HOLE. Be careful not to drill through the part.**



3. Correct the holes in the rear sprocket with the use of 0.6 - 0.65mm drill.
4. Install screws in the rear sprocket using CA glue.



5. Shorten the screws from the back side. Bottom end of the screw should be about 0.5mm above the sprocket level.



6. Using shortened screws as pins install the rear sprocket mounting plate. Take a note that 2 pins are needed to easily and correctly position the rear sprocket mounting plate.