

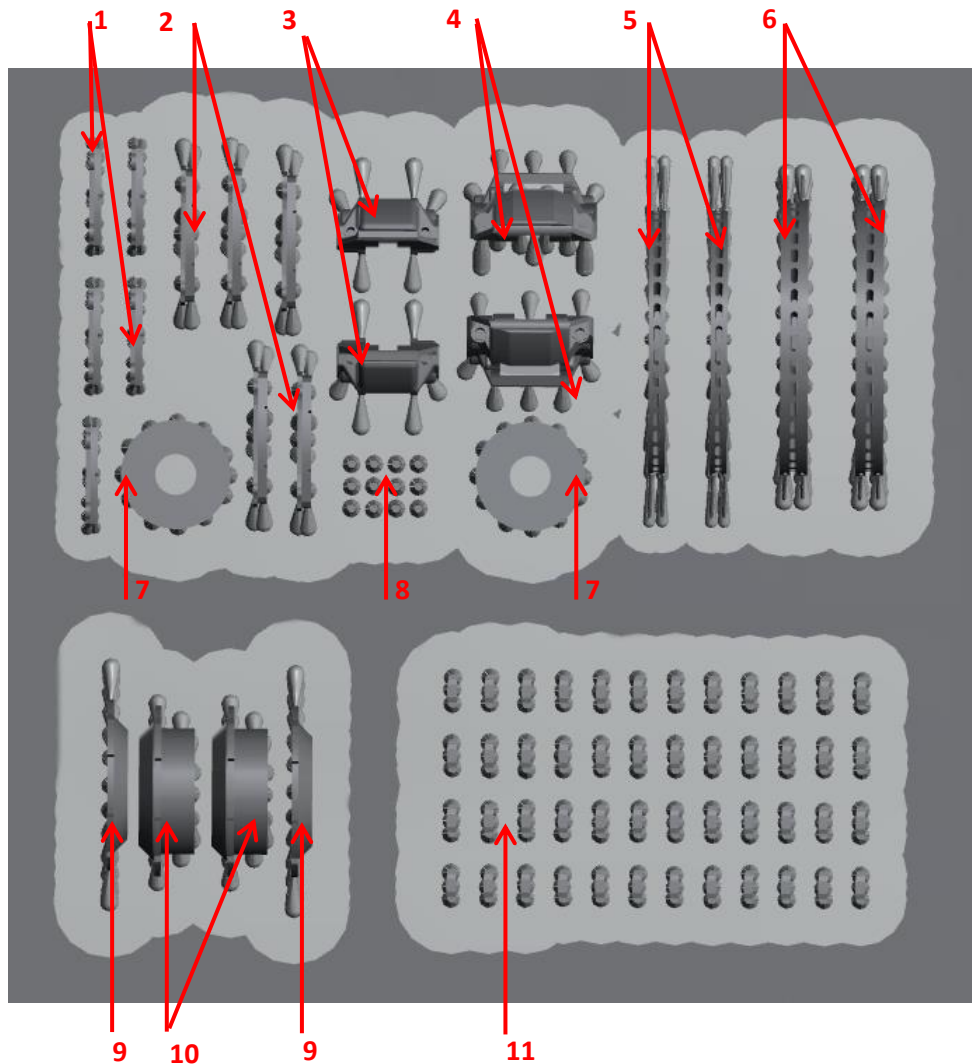
Falcon

Scale Models



Toyota Supra (Tamiya 24371, 24351) - Brembo brakes set

Catalog no.: FSM C 16



Parts list:

Part no.	Part name	Part no.	Part name
1	Rear brake pad x5	7	Rear central disc backside cylinder x2
2	Front brake pad x5	8	Bleeding screw x12
3	Rear brake caliper x2	9	Rear central disc x2
4	Front brake caliper x2	10	Front central disc x2
5	Rear rotor x2	11	Rotor – central disc connector x48
6	Front rotor x2	----	metal wire x1

Installation guide

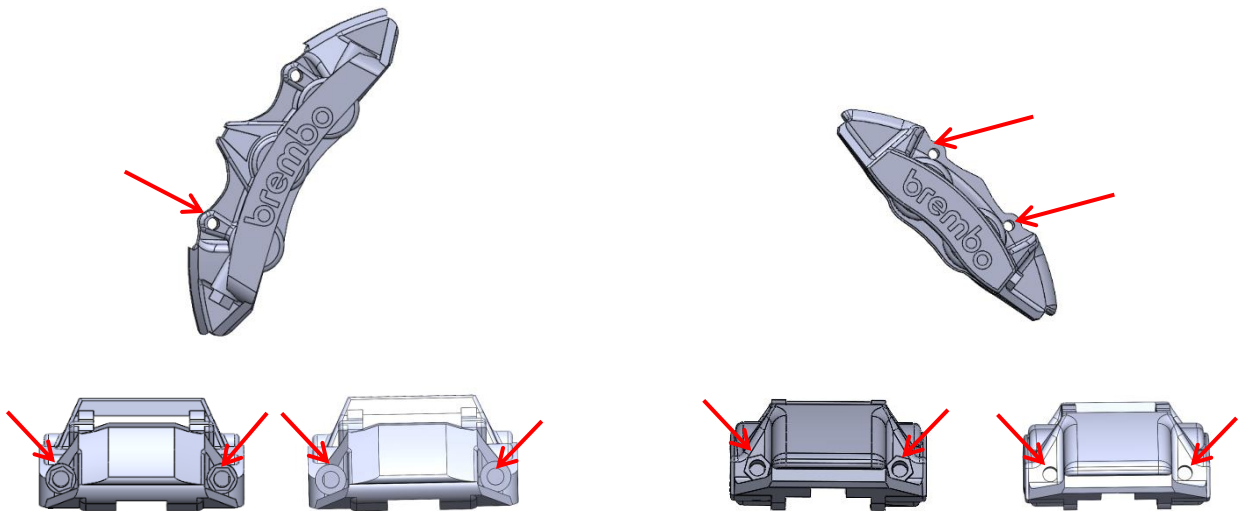
Cut all parts with sharp cutters like Tamiya 74123. Do not break off parts.

Use CA glue to join resin parts together as well as to join resin parts with the ones from the base kit.

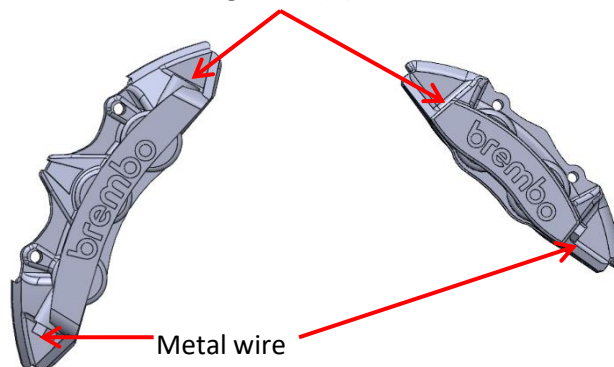
Front/ rear brake caliper

Note there are left and right brake calipers both for front and rear.

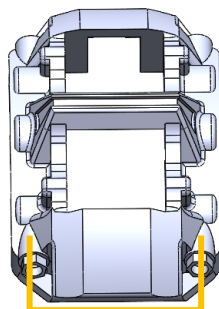
Correct marked holes with 0.3mm followed by 0.4 mm drill.



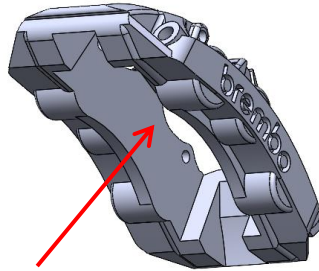
Insert bleeding screw (8) on both sides



Bend metal wire into U shape: **FRONT** 2mm/5mm/2mm **REAR** 2mm/4mm/2mm – first and last lengths can be greater as wire goes into the installation holes

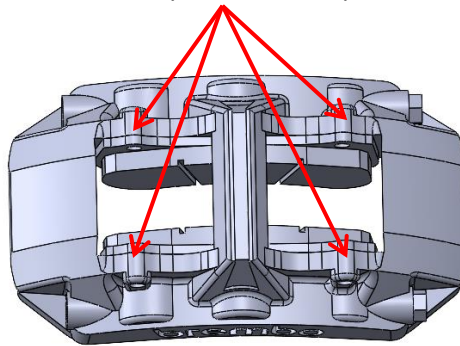


Front/rear brake pads installation

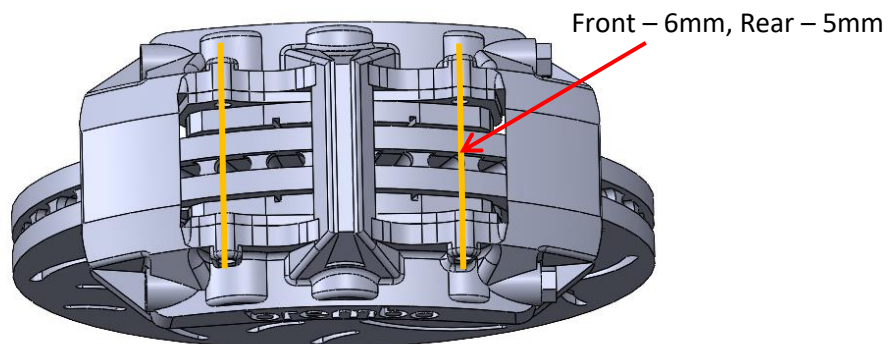


On both sides: apply Micro Kristal Clear and insert brake pad. Do not use CA glue.

Initially align installation holes in brake caliper and brake pads.

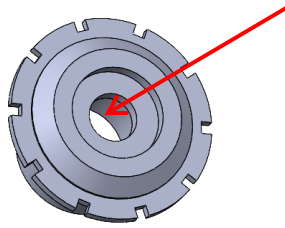


Temporary (without any glue) install brake rotor and then push metal wire through the holes. Fix wires position from the back side with CA glue.

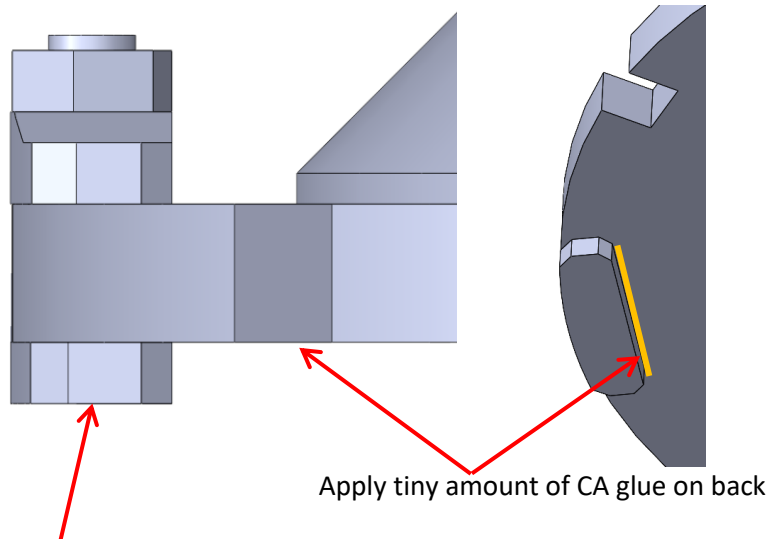
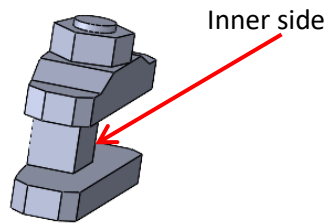


Central disc

Check the central hole if it fits smoothly the rim central pin. If not correct with 2.0 – 2.1mm drill.



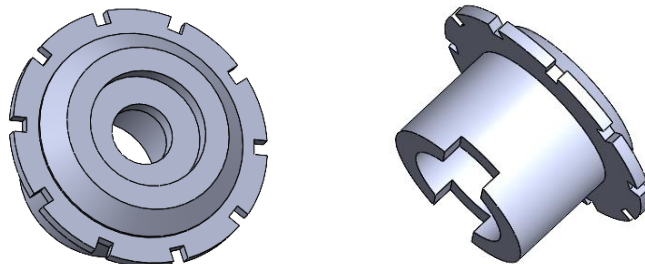
Install the connector (11) on the central disc. Note that it has inner and outside part.



When all connectors are installed one gently sand down their bottoms to make it even.

Rear disc only

With CA glue join rear central disc backside cylinder (7) and rear central disc (9)



Final assembly remark

Install rotors with central discs on their places. Then install brake calipers. Their position can be taken from the marking diagram from the base kit manual (front caliper - center of the caliper align with center point the rotor, rear caliper – slightly towards the ground, located between upper and lower wishbones).

Note that central disc backside cylinder (7) and front central disc (10) have installation cuts like parts in the base kit.

Base color paint type: acrylic.

Text color paint: enamel.

Reference photos

