

# Falcon Scale Models



*Suzuki GSX RR 2020 (Tamiya 14139) – chain*

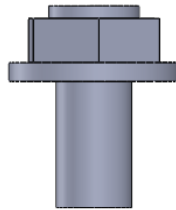
*Catalog no.: FSM P004*

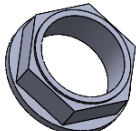
## Installation guide

### *Chain installation:*

1. Remove all supports holding the chain. Use sharp cutters like Tamiya 74035. Do not break off the chain. See the video on supports removal at [www.falconscalemodels.com](http://www.falconscalemodels.com) in the manual section.
2. Remove all the supports holding screws having in mind:  
**REMARK 1:** Rear sprocket screws and chain tensioner screws should have an installation pin.

Properly cut off parts:

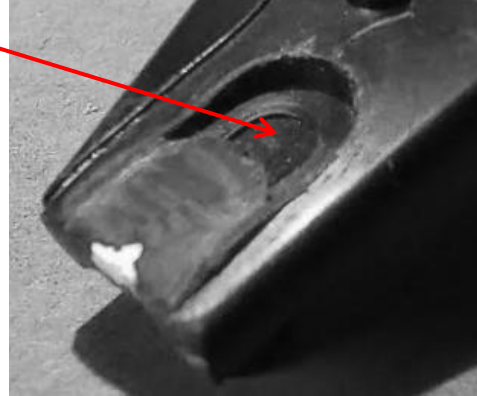


3. Remove all the supports holding sprockets and smooth the back surface of the sprockets.
4. Using 0.65 - 0.7mm drill correct holes in both sprockets in which the screws will be installed.
5. After painting install screws in the sprockets using CA glue or Micro Kristal Klear.  
**REMARK 1:** If the screws are too long shorten them after installation cutting off unneeded fragment from the back side of the sprocket.  
**REMARK 2:** It is suggested to use Micro Kristal Klear glue as to excess can be removed with warm water without damaging painted surface.
6. Install the sprockets inside the chain.  
See the video on sprocket installation at [www.falconscalemodels.com](http://www.falconscalemodels.com) in the manual section.  
Gently widen the chain and insert the sprocket onto the central pins of the chain arc.  
In the next step, lightly raise the chain and pull it in the direction of the opposite sprocket to place all the pins on the sprocket. Secure the sprockets position using CA glue or Micro Kristal Klear having in mind remark 2 from step 5.
7. Split the chain using base kit part as a reference. Cut links one by one. Do not cut all links at once as you can damage the chain.
8. Use  as a nut for front sprocket.

*Chain tensioner installation:*

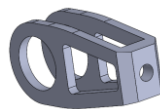
Remark

Those sections in B28 and B29 should be removed to achieve more realistic look. This task should be done only by the most experienced modeler. This step IS NOT REQUIRED for installation of FSM 1 kit.



1. Rear brake side - part B28

- a. Smooth the central section of D45



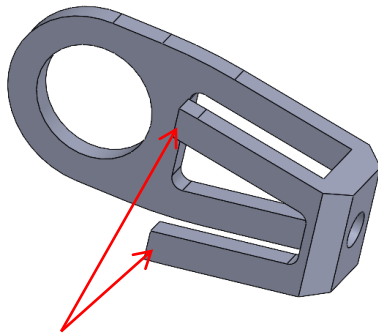
- b. Replace D10 with chain tensioner
- c. Put on chain tensioner on B28 and drill 0.7mm hole (depth about 0.3mm) in the swingarm. Use hole for tensioner screw as a guide for the drill. **If you do not want to drill hole simply shorten the chain tensioner screw.**
- d. Install chain tensioner screw (long one).

2. Chain side – part B29

- a. Smooth the outer side of B29 as show below




- b. Modify chain the inner section of tensioner as shown below.



Inner elements must touch the cylinder on which you will install the B30.

- c. Put on chain tensioner on B28 and drill 0.7mm hole (depth about 0.3mm) in the swingarm. Use hole for tensioner screw as a guide for the drill. **If you do not want to drill hole simply shorten the chain tensioner screw.**
- d. Install chain tensioner screw (long one).

3. Use  to cover rear wheel mounting screw head.

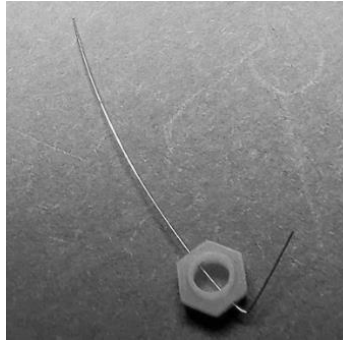
4. Use  to cover the chain tensioner central hole on the chain side.

Wire installation holes

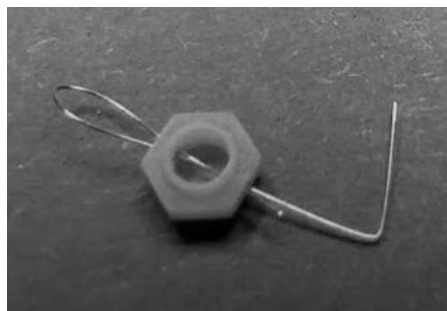
Additionally use thin wire to create cotter which must be passed through the holes in the nut.

Wire installation steps:

- bend one side of the wire to form it into L shape so the nut will not fall off the wire during installation process,



- holding the nut and bent section of the wire with your fingers grab the second end with the sharp pointed tweezers and pass it through both installation holes. This step can be tricky so take your time. The final result is worth of your work,

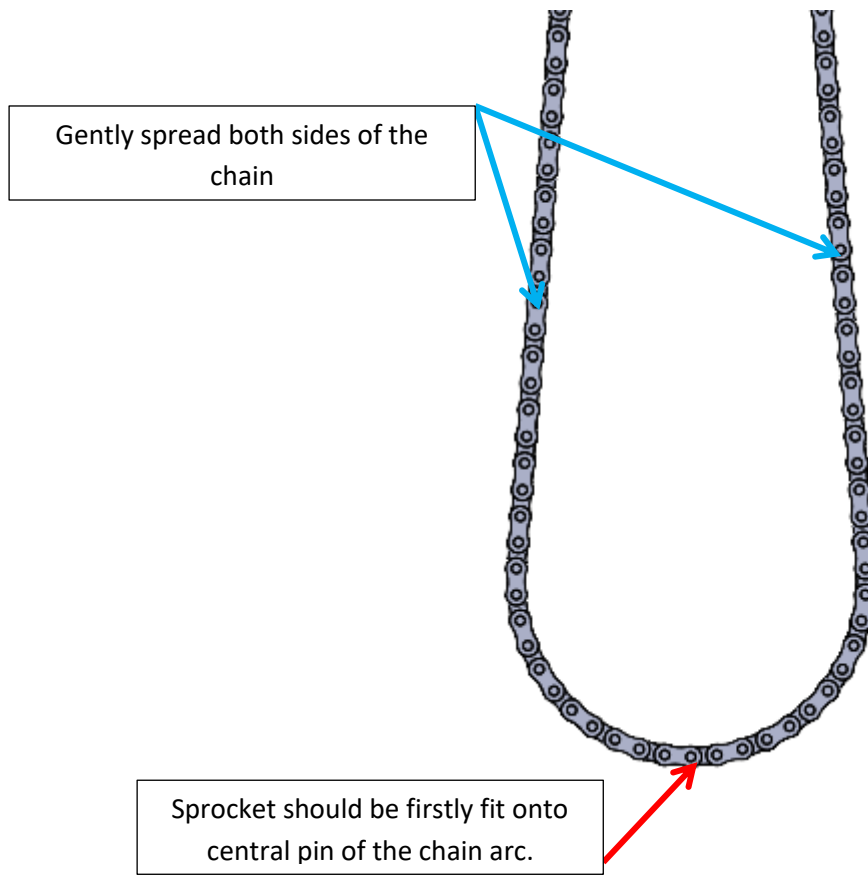


- when the second end of the wire has passed both installation holes bend it like the other end and shorten the wire.



*The wire can be replaced by the 0.1 mm fishing line (not included)*

### Sprocket installation



Proper position of the sprocket inside the chain.

